

## Automotive Diagnosis Oscilloscope

8 Channels, 100KHz, 2.4MSa/s

**Hantek1008C**



## Feature

- Highly efficient and cost-effective;
- 8 channels oscilloscope for vehicle testing;
- 2.4MSa/s real time sampling rate, 12bit vertical resolution;
- 8 channels programmable generator which can analog signals of crankshaft, camshaft etc.

### 1) Vehicle Testing

- First Diagnosis: Intake manifold vacuum & ignition, Petrol fumes adjusting valve vacuum & ignition, Idle exhaust ignition, Starting exhaust ignition
- Ignition: primary and secondary
- Sensor: Air Flow Meter, Camshaft, Crankshaft, Distributor, Lambda sensor, Throttle position
- Bus Diagnosis: CAN bus data examine, CAN bus signal integrity, CAN bus LH long time acquisition, LIN bus
- Performer: Petrol/Diesel
- Starter and charging circuits

### 2) Oscilloscope

- 8 channels oscilloscope, 2.4MSa/s real time sampling rate
- 12 bits vertical resolution, spectrum analysis function

### 3) Programmable Generator

- 8 channels programmable generator
- Can analog signals of crankshaft, camshaft etc.

### 4) Others

- USB 2.0 interface plug and play, and no need extra power supply;
- More than 20 types of automatic testing function, a similar interface with benchtop oscilloscope, easy to use;
- Software support: Windows NT, Window 2000, Windows XP, VISTA, Windows 7, Windows 8, Windows 10.

# Benefits

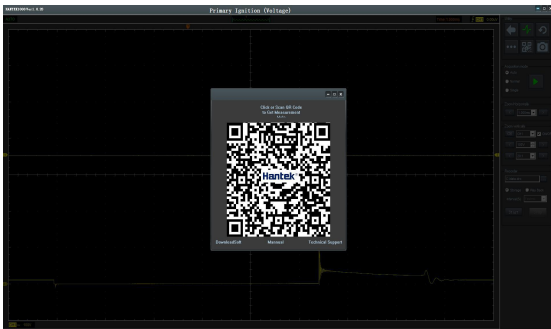
### Vehicle Testing Photo



### Function Selection Interface



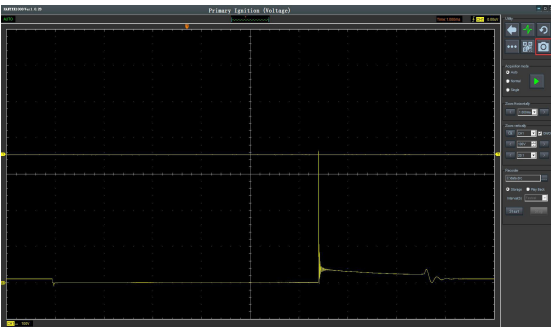
### Callout the quick guide column with one button



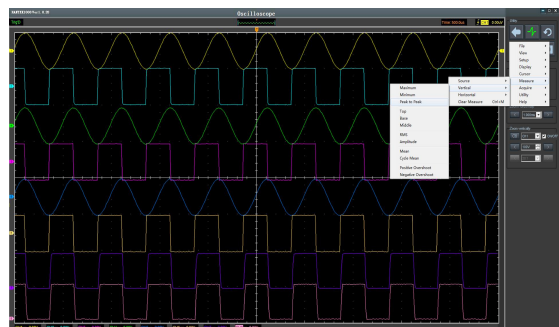
### Vehicle Diagnosis Interface



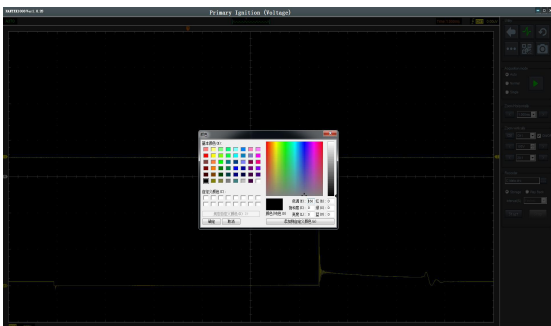
### Reference Waveforms



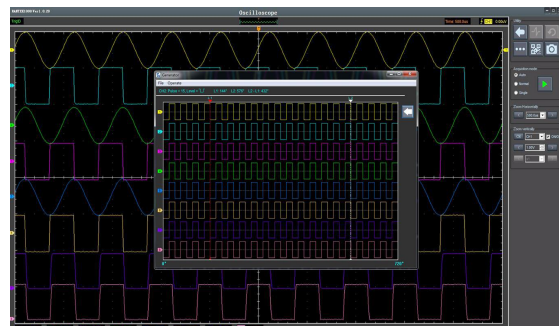
### 8 Channels Waveforms



### Selectable Color and Lightness



### Signal Generator









Accessories Kit



Kit Content: 1pc 8 channels USB Oscilloscope+ 1pc Toolbag + 1pc carton box +Automobile Diagnosis  
Accessories: 8pcs Test Leads with BNC plug and alligator clip HT324, 1pc auto ignition probe HT25, 1pc  
USB cable, 1pc CD.

## Accessories List in Hantek1008C

Picture	Description	Picture	Description
	HT25 Auto Ignition Probe		HT324 Test Leads with BNC Plug and Alligator Clip
	USB Cable		CD
	Toolbag		Carton Box

## Specification

Model Hantek1008C

### OSCILLOSCOPE MODE

#### Vertical System

Analog Channel	8
Input Impedance	Resistance: 1M $\Omega$
Input Sensitivity	10mV/div to 5V/div
Input Coupling	DC
Resolution	12 bits

#### Horizontal System

Memory Depth	4K
--------------	----

Max. Input	400V (DC+AC Peak)
Real-Time Sampling Rate	2.4MSa/s
Time BaseRange	1ns/div to 20000s/div(1-2-5sequences)
Time Base Precision	±50ppm
<b>Trigger System</b>	
Time Base Range	1ns/div to 20000s/div(1-2-5sequences)
Time Base Precision	±50ppm
Trigger Source	CH1, CH2,CH3,CH4, CH5, CH6,CH7,CH8
Trigger Mode	Edge
<b>X-Y Mode</b>	
X-Axis Input	CH1
Y-Axis Input	CH2
<b>Cursors and Measurement</b>	
Voltage Measurement	Vpp, Vamp, Vmax, Vmin, Vtop, Vmid, Vbase,Vavg, Vrms, Vcrms, Preshoot, Overshoot
Time Measurement	Frequency, Period, Rise Time, Fall Time, Positive Width, Negative Width, Duty Cycle
Cursors Measurement	Horizontal ,Vertical, Track, Auto Measure Modes
Waveform Signal Process	+, - , x, ÷, FFT, Invert
Voltage Range	10mV to 5V/div @ x 1 probe 100mV to 50V/div @ x 10 probe 10V to 5000V/div @ x 1000 probe 100V to 50000V/div @ x 10000 probe 200mV to 100V/div @ 20:1
Current Range	100mA to50.0A/div @ CC65(20A) 1000mA to500.0A/div @ CC65(65A) 1A to100.0A/div @ CC650(60A) 1A to200.0A/div @CC1100(100A) 10A to2000.0A/div @CC1100(1100A)
FFT	Rectangular, Hanning, Hamming, Blackman Window
Math	Addition, subtraction, multiplication, division
<b>PROGRAMMABLE GENERATOR MODE</b>	
Channel	8
Output Level	LVTTTL
Frequency Range	0-250kHz
Interface	USB 2.0(Full Speed)
Power	No need extra power supply
Size & Weight	185 x 150 x 27 (mm); 0.35kg